

Every move matters

LET
LEEDS



Nunthorpe Road

Rodley, Leeds, LS13 1JS

£142,950

www.let-leeds.com

Property Summary

LET LEEDS are proud to present this excellent 2 bed back to back terraced property ideal for a first time buyer in a fantastic location close to local amenities.

Briefly comprising an Entrance Hallway, Lounge, Kitchen, 2 Double Bedrooms and a 3 piece suite Bathroom.

ENTRANCE HALL Light and airy entrance hall with laminate flooring, neutral décor, radiator, stairs to the first floor and door to the Lounge.

LOUNGE A spacious Lounge, neutrally decorated and carpeted, with feature stone fire surround, electric fire, radiator, double glazed window to the front and stairs leading to the lower ground floor.

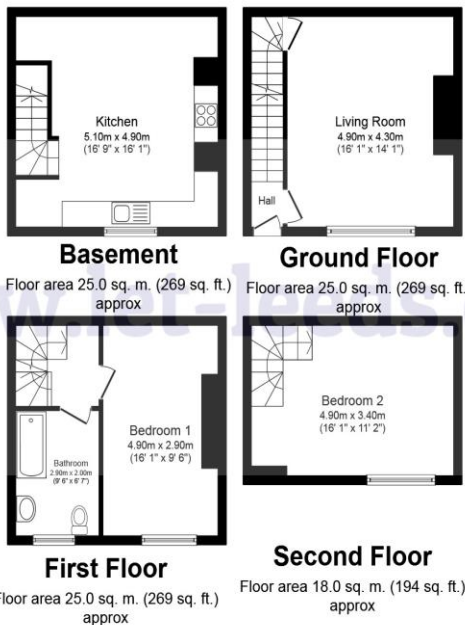
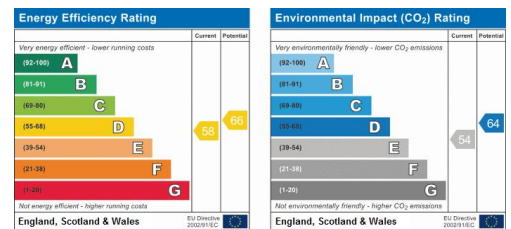
DINING KITCHEN A wonderfully designed Kitchen/Dining area, neutrally decorated, with laminate flooring and perfect for entertaining guests. With modern base units, plenty of storage, splash back tiles, integrated dishwasher, electric oven with gas hob.

MASTER BEDROOM Located on the first floor is this great sized double Bedroom with fitted carpet, a radiator and double glazed window to the front.

BATHROOM Light, airy and spacious modern bathroom with three piece white suite, thermostatic shower over the bath, chrome towel rail and combi boiler.

BEDROOM TWO An excellent second bedroom, offering lots of space, neutrally decorated, with double glazed window to the gable end and a velux window and radiator.

EXTERNAL Small yard to the front with on-street parking.



This floor plan is for illustration purposes only and may not be representative of the property. The position and size of doors, windows and other features are approximate. Unauthorized reproduction prohibited. © PropertyBOX

- Stone Mid Terrace Property
- Fantastic Location
- Set Out Over 4 Floors
- 2 Double Bedrooms
- Modern Spacious Kitchen
- Ideal for First Time Buyers

St Andrews Court
Leeds
West Yorkshire
LS3 1JY

Agents Note: Whilst every care has been taken to prepare these sales particulars, they are for guidance purposes only. All measurements are approximate are for general guidance purposes only and whilst every care has been taken to ensure their accuracy, they should not be relied upon and potential buyers are advised to recheck the measurements