

Every move matters

LET
LEEDS



Exeter Drive

Middleton, Leeds, LS10 3UE

Starting Price £45,000

Property Summary

For sale by the modern method of auction with Advanced Property Auction. Starting price £45,000, plus reservation fees. LET LEEDS are delighted to offer this fantastic investment opportunity, to purchase a 1 bed, first floor maisonette in Middleton. Currently let out at £415pcm.

LET LEEDS are delighted to offer this fantastic investment opportunity, to purchase a 1 bed, first floor maisonette in Middleton.

Briefly comprising a spacious lounge, fitted kitchen, partially tiled bathroom and a great size double bedroom. Double glazing throughout, with its own private entrance, garden and allocated car parking space.

KITCHEN Fitted kitchen with a range of wall and base units, neutrally decorated with fitted flooring.

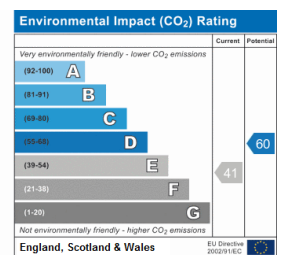
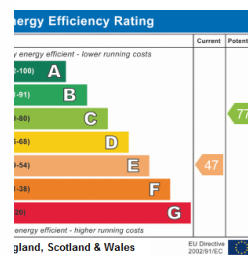
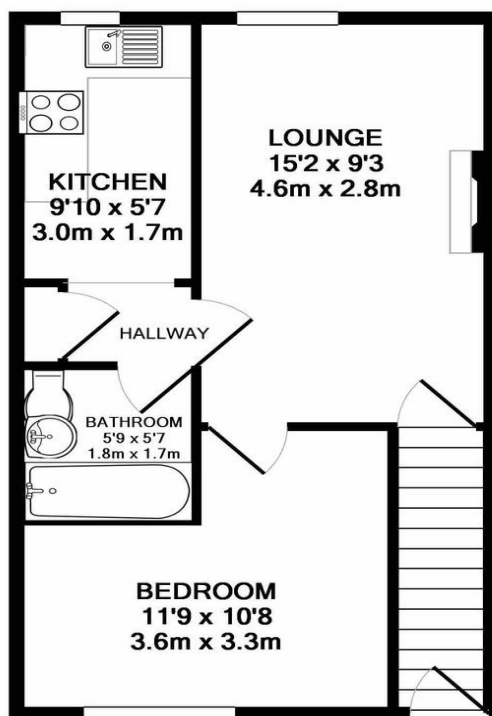
LOUNGE Good sized lounge looking out onto the front of the property. The room is decorated to a modern finish with fitted carpet.

BEDROOM Double sized bedroom which has been neutrally decorated with a feature wall and has fitted carpet. The bedroom also benefits from a built in wardrobe for storage.

BATHROOM Modern family bathroom with an electric shower over the bath, hand basin and WC.

FURTHER INFORMATION Currently let and managed by Let Leeds at £415pcm.

TO VIEW PLEASE CALL LET-LEEDS.COM SALES DEPARTMENT ON 0113 322 9533. The property is currently occupied by a tenant, therefore we must give at least 24 hours written notice prior to a viewing.



- BUY TO LET INVESTMENT
- NO SERVICE CHARGE
- CREATING A GROSS ANNUAL YIELD OF 9.9%
- PARKING
- CURRENTLY LET OUT AT £415PCM
- PRIVATE GARDEN
- CHAIN FREE
- MODERN METHOD OF AUCTION

TOTAL APPROX. FLOOR AREA 383 SQ.FT. (35.6 SQ.M.)

Whilst every attempt has been made to ensure the accuracy of the floor plan contained here, measurements of doors, windows, rooms and any other items are approximate and no responsibility is taken for any error, omission, or mis-statement. This plan is for illustrative purposes only and should be used as such by any prospective purchaser. The services, systems and appliances shown have not been tested and no guarantee as to their operability or efficiency can be given
Made with Metropix ©2017

St Andrews Court
Leeds
West Yorkshire
LS3 1JY

Agents Note: Whilst every care has been taken to prepare these sales particulars, they are for guidance purposes only. All measurements are approximate are for general guidance purposes only and whilst every care has been taken to ensure their accuracy, they should not be relied upon and potential buyers are advised to recheck the measurements