

# Every move matters

LET  
LEEDS



**Exeter Drive**

Middleton, Leeds, LS10 3UE

**£49,995**

# Property Summary

LET LEEDS are delighted to offer this fantastic investment opportunity, to purchase a 1 bed, first floor maisonette in Middleton. Currently let out at £415pcm.

LET LEEDS are delighted to offer this fantastic investment opportunity, to purchase a 1 bed, first floor maisonette in Middleton.

Briefly comprising a spacious lounge, fitted kitchen, partially tiled bathroom and a great size double bedroom. Double glazing throughout, with its own private entrance, garden and allocated car parking space.

**KITCHEN** Fitted kitchen with a range of wall and base units, neutrally decorated with fitted flooring.

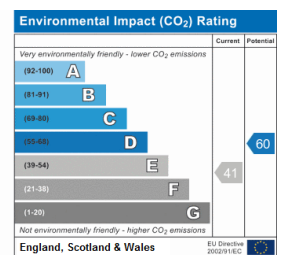
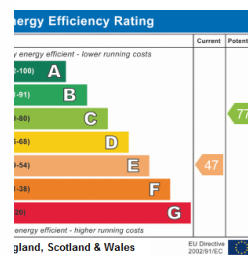
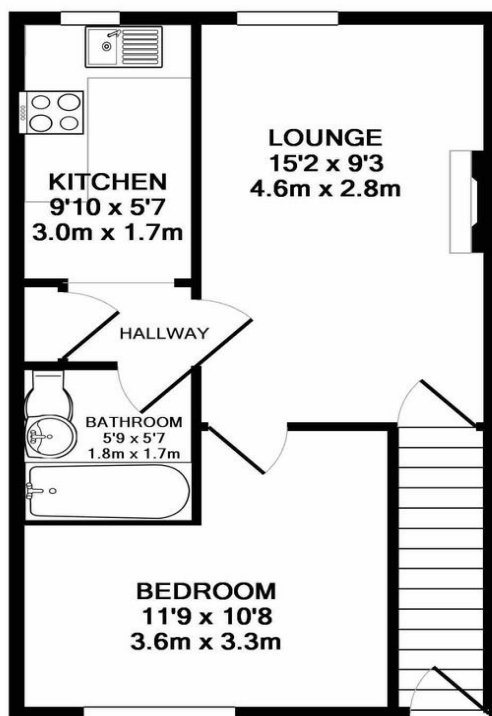
**LOUNGE** Good sized lounge looking out onto the front of the property. The room is decorated to a modern finish with fitted carpet.

**BEDROOM** Double sized bedroom which has been neutrally decorated with a feature wall and has fitted carpet. The bedroom also benefits from a built in wardrobe for storage.

**BATHROOM** Modern family bathroom with an electric shower over the bath, hand basin and WC.

**FURTHER INFORMATION** Currently let and managed by Let Leeds at £430pcm.

**TO VIEW PLEASE CALL LET-LEEDS.COM SALES DEPARTMENT ON 0113 322 9533.** The property is currently occupied by a tenant, therefore we must give at least 24 hours written notice prior to a viewing.



- BUY TO LET INVESTMENT
- NO SERVICE CHARGE
- CREATING A GROSS ANNUAL YIELD OF 10.3%
- PARKING
- CURRENTLY LET OUT AT £415PCM
- PRIVATE GARDEN
- CHAIN FREE
- EXTENDED LEASE AT CIRCA 99 YEARS

TOTAL APPROX. FLOOR AREA 383 SQ.FT. (35.6 SQ.M.)

Whilst every attempt has been made to ensure the accuracy of the floor plan contained here, measurements of doors, windows, rooms and any other items are approximate and no responsibility is taken for any error, omission, or mis-statement. This plan is for illustrative purposes only and should be used as such by any prospective purchaser. The services, systems and appliances shown have not been tested and no guarantee as to their operability or efficiency can be given  
Made with Metropix ©2017

St Andrews Court  
Leeds  
West Yorkshire  
LS3 1JY

Agents Note: Whilst every care has been taken to prepare these sales particulars, they are for guidance purposes only. All measurements are approximate are for general guidance purposes only and whilst every care has been taken to ensure their accuracy, they should not be relied upon and potential buyers are advised to recheck the measurements